



GO NATIVE!

January 27, 2026

Presentation Agenda

Native Plants in Morgan Hill – Then & Now
Lesley Miles & Susan Farris

Valley Water Rebate Program - **Kathy Kellerman**

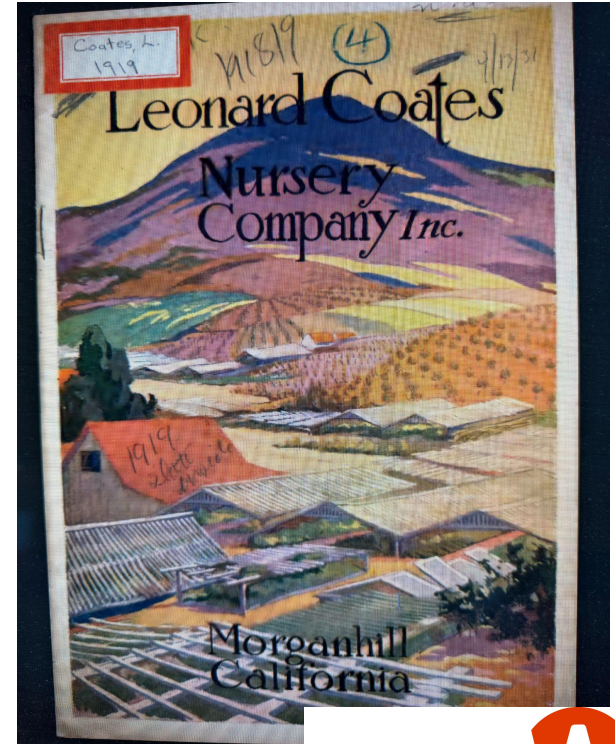
Native Plants in Your Garden – **Jenny Redfern**

Local Native Plant Sourcing– **Sierra Azul Nursery**

Morgan Hill has a history of native plant breeding and growing!

Leonard Coates- stated in an April 1926... Evolution of a Nursery

Some 25 years ago it was my ambition to make an exhaustive collection of California native plants and trees. An ex-forest ranger of the Santa Cruz mountains helped to collect seeds, and in a few years scores of varieties were growing thriftily, by frequent transplanting became adapted for artificial planting.



A Bit of History...

Located where the Hale Extension meets West Dunne, the growing grounds of the Leonard Coates Nursery extended on both sides of West Dunne up into the foothills



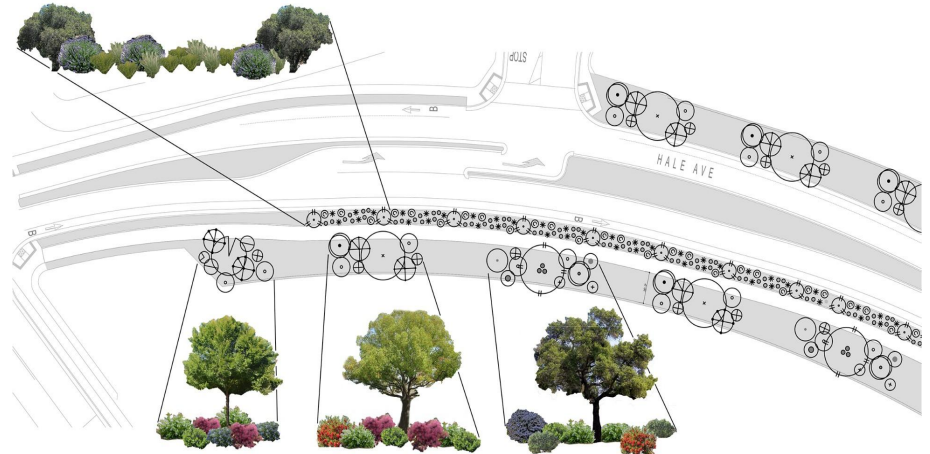
Hale Extension planting plan and clustering concept



The Hale Avenue landscape walking path provides a unique opportunity to create an educational and innovative landscape with large planting areas to accommodate larger shade trees, shrubs, and mulched areas. The intent of the design is to focus on trees and shrubs that attract and provide habitat for birds and bees and address climate change.

The inclusion of plant materials native to California with reduced water requirements and only low water landscape bubblers will provide a blueprint for larger landscape spaces and also provide education for homeowners as they walk or bike along the pathways and bikeways.

The change in project design is consistent with the Habitat policies as well as Santa Clara County water wise planting practices.



5/16" = 1'-0"
5/6/2021

HALE EXTENSION LANDSCAPE REDESIGN



WESTON MILES
ARCHITECTS • LANDSCAPE



1/32" = 1'-0"
5/5/2021

HALE EXTENSION LANDSCAPE REDESIGN



WESTON MILES
ARCHITECTS • LANDSCAPE



Blooming cycles and sequential pollinators and groupings

WINTER BLOOMING and FRUITING

Arbutus Marina
Manzanita
Ceanothus
Coffeeberry
Toyon



SPRING BLOOMING and FRUITING

Ceanothus
Redbud
Sage
Mimulus
Oak Manzanita Arbutus

SUMMER BLOOMING and FRUITING

Mimulus
Sage
Buckwheat
Toyon
Oregon Grape

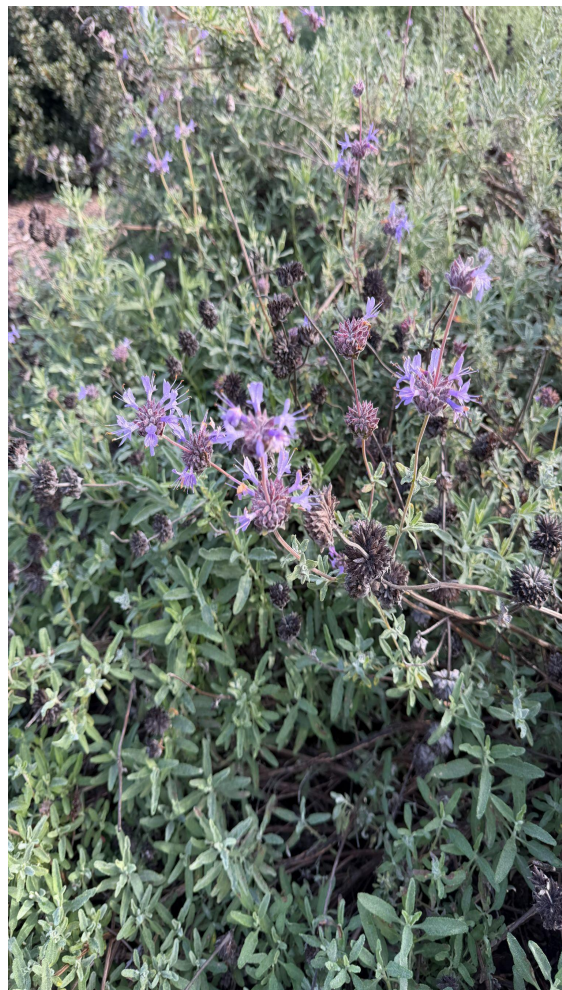
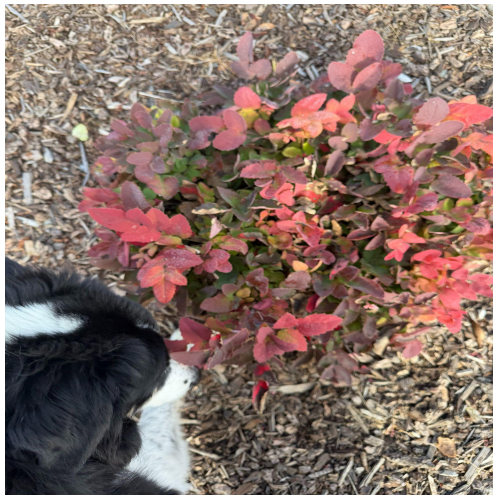
FALL BLOOMING and FRUITING

Oregon Grape
Mimulus
Buckwheat
Toyon
Sage Coffeeberry

4th year analysis and lessons learned



- The most drought resistant-Eriogonum fasciculatum-Buckwheat
- The fastest growth-Heteromeles arbutifolia- Toyon or Christmas Berry
- The most delectable to deer- Arctostaphylos 'Howard McMinn'



- The most aromatic and profuse bloomer-Salvia clevelandii- Cleveland Sage, Eriogonum fasciculatum-Buckwheat
- The most organized, fire resistant and neat plant-Frangula californica 'Leatherleaf'- Dwarf Coffeeberry
- The most colorful and great for a small garden- Mahonia aquifolium 'compacta'
 - Oregon Grape
 -
- The most fussy- Ceanothus Ray Hartman


Valley Water Rebate Program

5:03 PM Thu Jan 8

valleywater.dropletportal.com


Valley Water Landscape Rebate Program

Home Get Started Support Resources Sign







Overview & Rates Landscape Conversion In-line Drip Lawn to Mulch Irrigation Equip. Rainwater Capture

Design Assistance



Our Landscape Rebate Program can help you transform your thirsty yard into a beautiful water-wise landscape and make your irrigation equipment more efficient.

- Get \$200 for every 100 square feet of lawn or pool you convert, for a maximum of \$3,000 for residential sites, and \$100,000 for commercial and institutional sites. Some cost-sharing areas may be eligible for even more!
- **Artificial turf is not rebated through this program**



Valley Water Landscape Rebate Program

[Home](#)

1. **CREATE A USER ACCOUNT** to submit your online application. Customers who do not have the ability to submit an online application should call (408) 630-2554 for assistance.
2. **PROVIDE INFORMATION ABOUT EXISTING SITE:** We need to know about the current condition of your yard. Include photos, the estimated size of the project area (square footage), and/or existing equipment information.
3. **PRE-INSPECTION:** Once we receive your initial application, we will contact you to schedule a pre-inspection, whether file or on-site, as needed.
4. **SUBMIT YOUR PROPOSAL:** Share the details on your dream yards! Tell us what you are planning to do with your project, what plants you will use for Landscape Conversion Projects, and how you will upgrade your irrigation system (please include quantity, make and models of the new efficient equipment).
5. **GET THE GREEN LIGHT:** After we issue your "Notice to Proceed", you will have 90 days to complete your project. Remember not to start your project before receiving approval!
6. **FINAL REVIEW:** Your project is done! Submit your completed project photos and/or receipts and we will contact you to schedule a post inspection if needed.
7. **CASH YOUR REBATE CHECK:** Your rebate check will be sent to you 4-6 weeks after the post-inspection is approved.

REMEMBER! To qualify for the rebate, you must receive the Notice to Proceed BEFORE starting to remove your lawn/pool or buying the materials for your project.



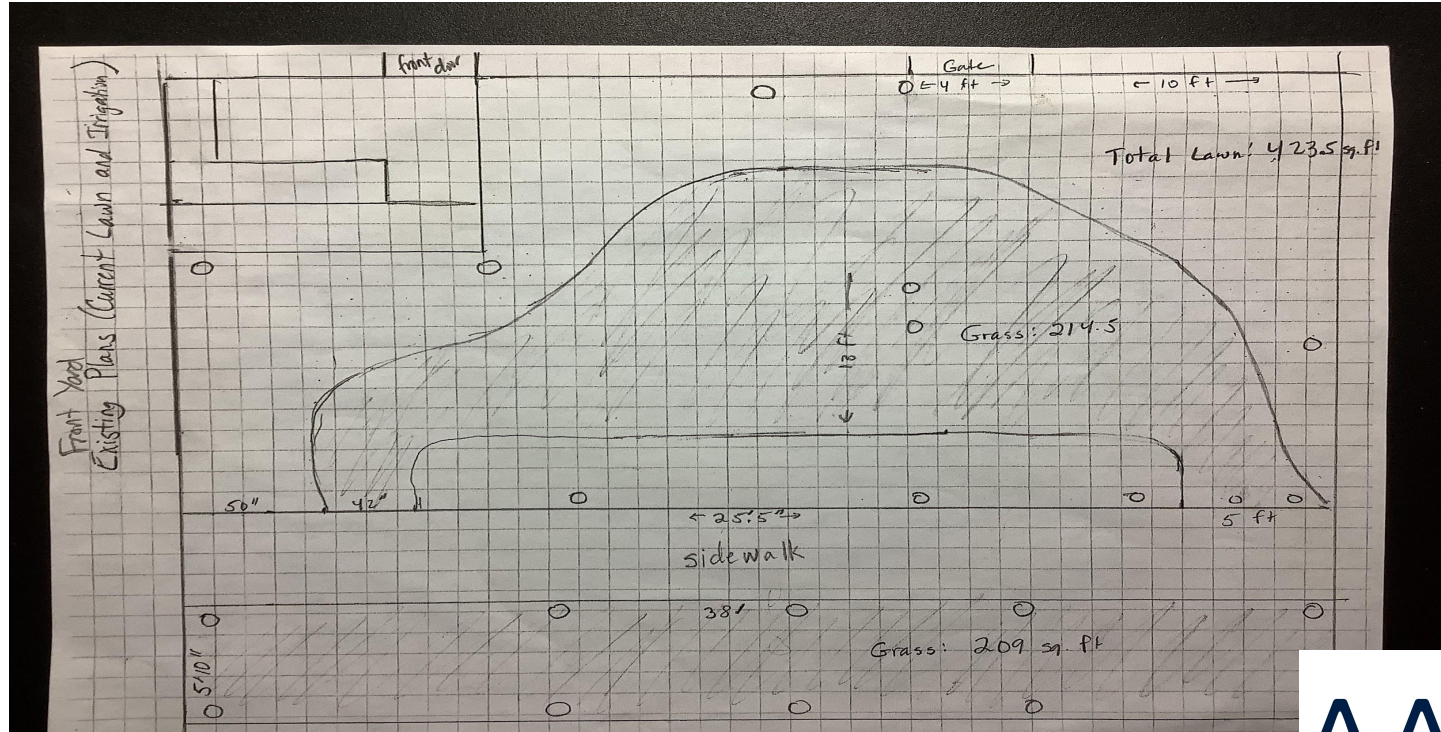
Before



Before



Rough Map of Existing Yard (Example)



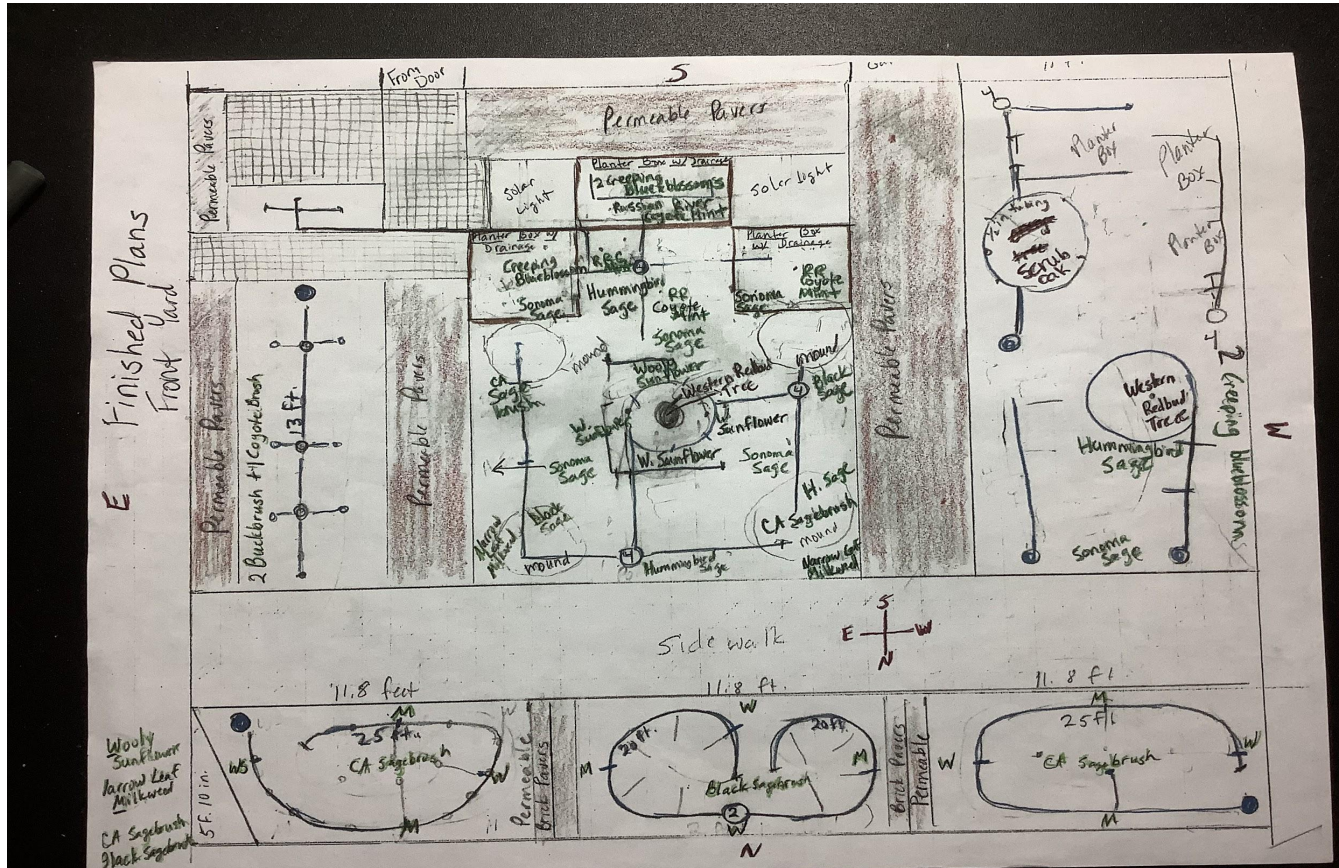
Plant List (Example)

1:24 PM Mon Jan 26

< Front Yard Plants

	A	B
1	Plant	Quantity
2		
3	Oregon Grape (Mahonia Aquifolium)	3
4	Western Redbud (Cercis occidentalis)	3
5	Cleveland Sage (Salvia Cleveland I)	3
6	CA Wild Lilac (Ceonothus)	1
7	Black Sage (Salvia melifera)	3
8	Sonoma Sage (Salvia so omens is)	6
9	Margarita BOP (Penstemon heterophyllus)	3
10	Monkey Flower (Diplacus aurantiacus)	1
11	Hummingbird Sage (Salvia spathacea)	1
12	Russian River Coyote Mint (Monardella villosa)	5
13	Wooly Sunflower (Eriophyllum Lana gum)	3
14	Canyon Grey Sagebrush (Artesmisia California)	2
15		

Finished Plans (Example)



After



After



Backyard



Selecting Native Plants for Your Garden or Lawn Replacement

Jenny Redfern, MG

South County Teaching and Demo Garden



UC Master Gardener

University of California
Agriculture & Natural Resources



What Do You Want When You're Done?

- Grass > maybe California thin (CA bent) grass
- Nice to look at > maybe Yarrow and Blue-eyed grass
- Attracts birds and bees > maybe Salvias like Bees' Bliss sage and White sage
- Shrub as focal point > maybe Toyon
- Tree for shade > maybe Valley oak or Pacific madrone
- Minimal care > maybe Deer grass ("Cousin Itt")



What will it look like? Seasons?



UC Master Gardener
University of California
Agriculture & Natural Resources

Crevice alumroot *Heucera micrantha*
Winter v. spring & summer

AAU 
Morgan Hill (CA) Branch

“ Well, I want grass...”

CA thin grass *Agrostis pallens*



Deer grass *Muhlenbergia rigens*



©JW



UC Master Gardener
University of California
Agriculture & Natural Resources

AAU 
Morgan Hill (CA) Branch

“I want color!”

Toyon *Heteromeles arbutifolia*

Madrone *Arbutus menziesii*



UC Master Gardener
University of California
Agriculture & Natural Resources



ill (CA) Branch

White Sage *Salvia apiana* Important to Indigenous peoples



UC Master Gardener
University of California
Agriculture & Natural Resources

Bees love it! Very fragrant!

AAU 
Morgan Hill (CA) Branch

Research and Plan

- Area/s dimensions v. plant's space requirements
- Sun - partial shade - complete shade
- Irrigation: By hand? Drip already installed?
- Flat v. slope, sun exposure
- Existing trees and roots
- Group by plants' requirements
- Non-/flowering seasonal progression



Where to Find Native Flowers Growing

- In spring and summer, take the Santa Clara County Parks Wildflower Tour.
- <https://storymaps.arcgis.com/stories/5de8e225102c43eba8c5f4bfbbbbe701>
- Open Space Authority Santa Clara Valley Wildflower Guide
- <https://www.openspaceauthority.org/whats-new/santa-clara-valley-wildflower-guide>



Where to Find Native Plants

- MG Gardens at Martial Cottle Park @ Snell and Chenoweth in SJ - California Native Garden - fall and spring plant sales
- Calscape.org - Make plans with Garden gallery, Design ideas - find requirements for planting, care, *water*
- California Native Plant Society - cnps.org - Santa Clara Valley chapter - plant sales
- Local garden stores with native plant sections



Native plants at the South County Teaching and Demo Garden



UC Master Gardener
University of California
Agriculture & Natural Resources

AAUW
Morgan Hill (CA) Branch

University of California Cooperative Extension (UCCE) Master Gardener Program of Santa Clara County

<http://mastergardeners.org/scc.html>

- Volunteers trained by UC.
- Help desk for gardening advice M-F, 9:30am – 12:30pm at <https://mgscchelpdesk.zohodesk.com>
- Sign up for monthly email with gardening tips.
- Demonstration & research gardens.
- Integrated Pest Management www.ipm.ucdavis.edu
- Talks, classes, demos, Spring and Fall Garden Markets.
- MG growing grounds and greenhouses at Martial Cottle Park.
- South County Teaching and Demo Garden at Monterey and Highland in San Martin, across from Animal Shelter. Mondays, 9am - noon.



UC Master Gardener

University of California
Agriculture & Natural Resources



Sierra Azul

NURSERY & GARDEN

2660 E Lake Ave

Watsonville, CA

(@ the base of Hwy 152)



*Source for Mediterranean climate friendly
plants including California natives!*



Some popular natives:



- *Arctostaphylos*
(Manzanita)
- *Eriogonum*
(Buckwheat)
- *Salvia*
(Sage)
- *Ceanothus*
(CA Lilac)



Plus a 2-acre sculpture garden!

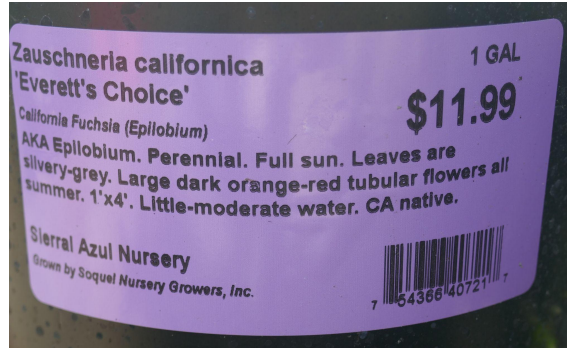


Sierra Azul

NURSERY & GARDEN

Labels are your friend!

Tips for understanding Plant Labels



- Genus species 'Variety/selection/cultivar'
- Common names
- Plant type
- Plant size (height x width)
- Flower color & timing
- Sun exposure & water needs
- Soil drainage requirements
- Cold hardiness

Sierra Azul
NURSERY & GARDEN



www.sierraazul.com
Open 7 days a week
10am - 5pm

